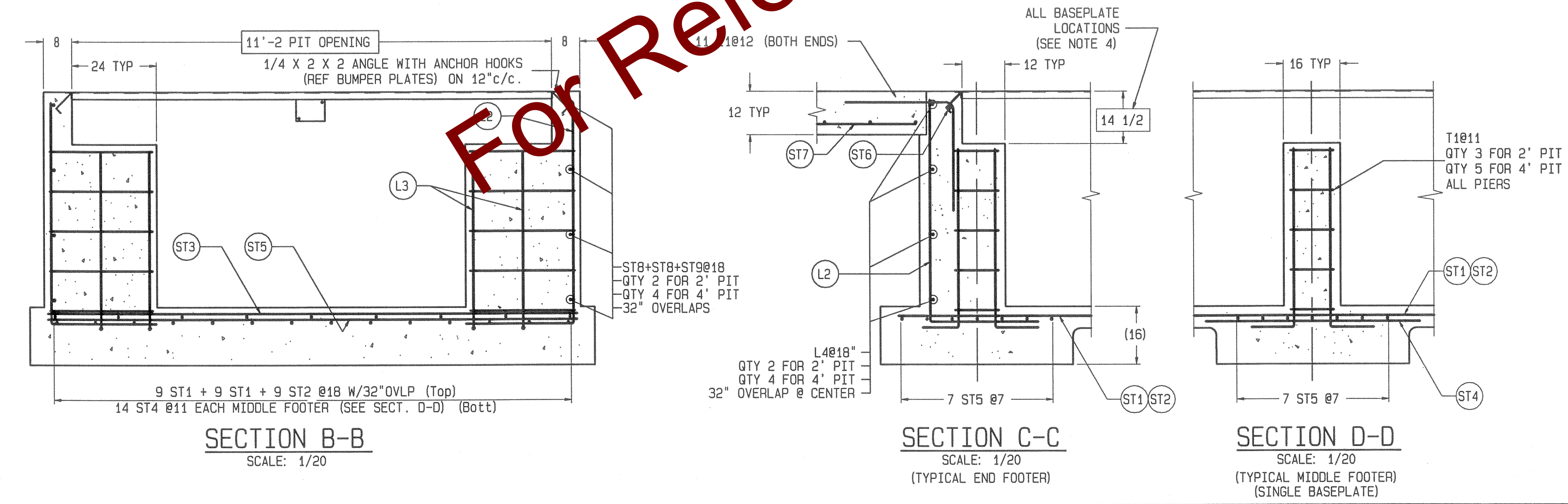




MATERIAL SUMMARY & "Y" DIMENSION CHART		
NOMINAL CLEARANCE BETWEEN FLOOR AND SCALE	2'	4'
CONCRETE (CU. YDS.)	57	68
REINFORCING STEEL	3645	4430
Y1 (SECTION A-A)	2'-11	4'-11
Y2 MINIMUM (SECTION A-A)	4'-3	6'-3



- ## NOTES:
- 1) USE MINIMUM 3000 PSI STRENGTH CONCRETE AT 28 DAYS WITH 5-7% AIR ENTRAINMENT.
 - 2) USE MINIMUM 60KSI YIELD DEFORMED REINFORCING STEEL. REBAR MINIMUM DEPTH OF COVER SHOULD BE IN ACCORDANCE WITH THE LATEST ACI BUILDING CODE REQUIREMENTS FOR STRUCTURAL CONCRETE (ACI 318-SECTION 7.7), UNLESS OTHERWISE SPECIFIED.
 - 3) FOUNDATION REQUIRES 2000 PSF RATED SOIL FOR APPLICATIONS WHERE LOADINGS ARE AT OR BELOW OVER-THE-ROAD LEGAL HIGHWAY LIMITS. 2600 PSF FOR ALL OTHERS.
 - 4) TOP OF CONCRETE AT BASEPLATE LOCATIONS TO BE LEVEL AND IN ONE PLANE $\pm 1/8"$
 - 5) DIAGONAL MEASUREMENTS ENDWALL TO ENDWALL MUST BE EQUAL WITHIN $1/2"$.
 - 6) BASEPLATE ANCHORS SUPPLIED BY METTLER-TOLEDO. USE BASEPLATES AS TEMPLATES TO LOCATE ANCHORS DURING SCALE INSTALLATION.
 - 7) RAMP LENGTH: -PER LOCAL REGULATIONS
- $1/2"$ SLOPE PER FOOT TYPICAL
 - 8) BOTTOM OF FOOTERS MUST BE BELOW LOCAL FROSTLINE.
 - 9) CONTRACTOR SUPPLIES:

-EXCAVATION	-CONCRETE AND FORMS
-REINFORCING STEEL	-1 $1/2"$ DIA CONDUIT
-CURB ANGLE ASSEMBLIES	-BUMPER PLATE ASSEMBLIES
(SECT B-B)	(VIEWS J-J & N-N)

DRAWING IS TO SCALE ONLY WHEN BORDER MEASURES 22-7/8" X 35" (FULL SIZE)

REV	CHANGE	BY	DATE	SCALE .02		THIS PRINT IS FURNISHED WITH THE UNDERSTANDING THAT THE ESSENCE THEREOF WILL NOT BE REPRODUCED IN WHOLE OR IN PART WITHOUT WRITTEN AUTHORIZATION OF METTLER-TOLEDO, INC. ALL RIGHTS ARE THE PROPERTY OF METTLER-TOLEDO, INC. AND WILL BE PROTECTED BY PATENTS.	REV
				DATE 09/02/09			
				DRN ADF APPD <i>MS</i>			
				TITLE VTC221 FOUNDATION,			
				80' X 11' PIT			
				UNLESS OTHERWISE SPECIFIED, ALL DIMENSIONS ARE IN INCHES, AND DIMENSIONAL TOLERANCES ARE:			
				FRACTIONAL DECIMAL ANGULAR			
				±1/32 .XX ±.02 ±.5°			
				.XXX ±.005			